



CROSSFLOW • PELTON • KAPLAN • FRANCIS

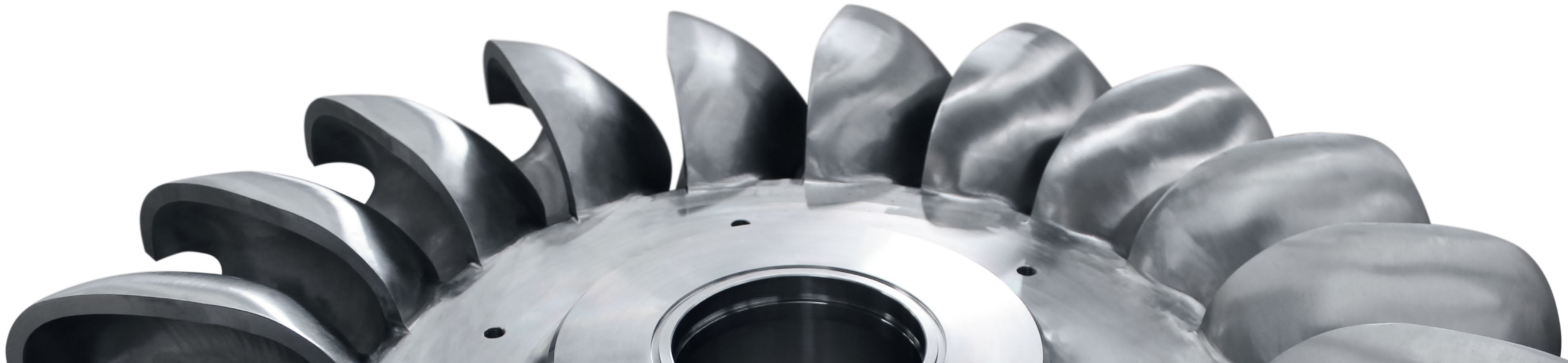
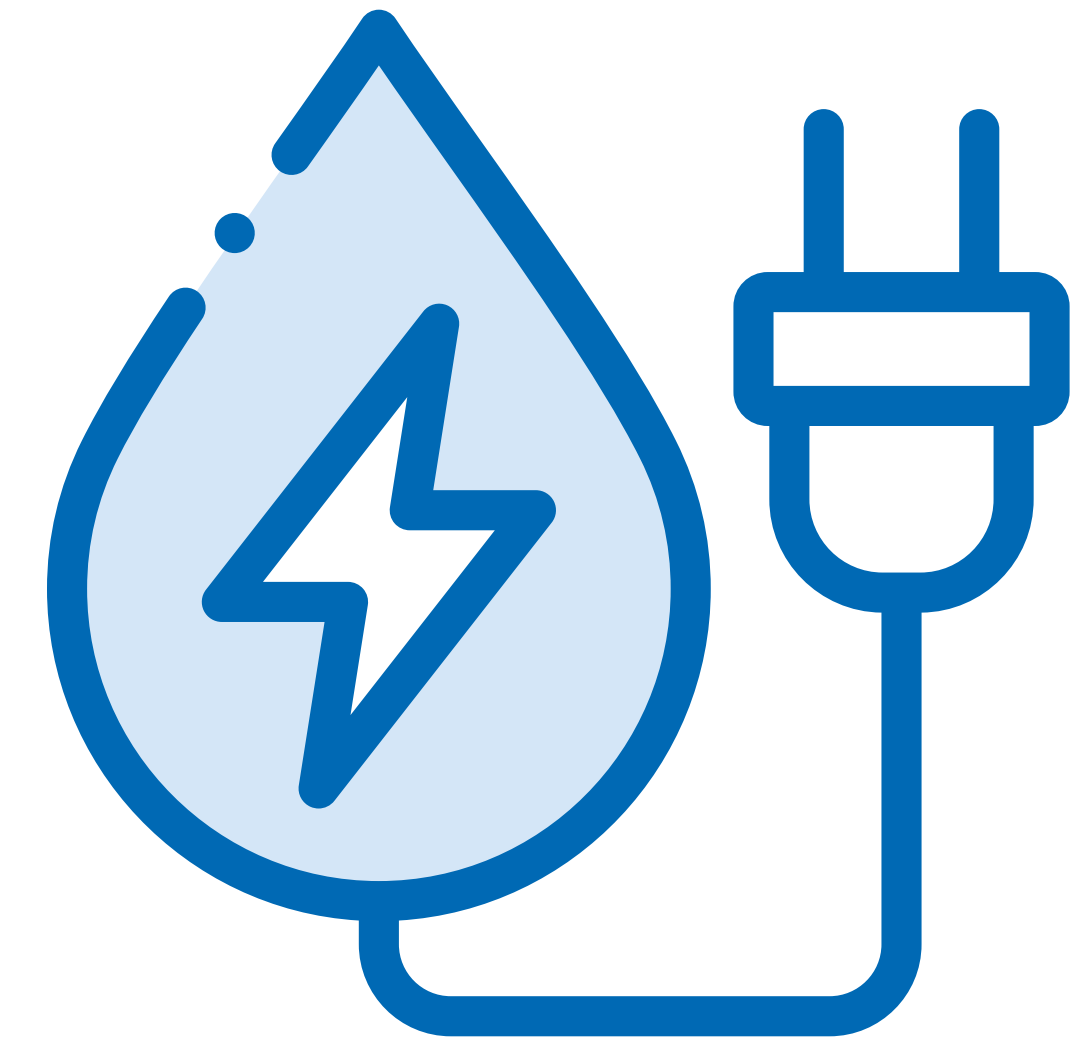
Manufacturing hydro turbines

since 1983



Ask for the best.

We rank among the leaders in the delivery of turbine technology for small and medium-sized hydropower stations.



Know-how, expertise and support.

From water-to-wire and beyond.

We design, develop, manufacture, deliver and install our equipment, prior to commissioning it. We train local personnel, and provide ongoing 24/7 remote assistance, as well as regular and on-demand service visits. All this, with a great deal of passion that dates back to the foundation of the company in 1983.



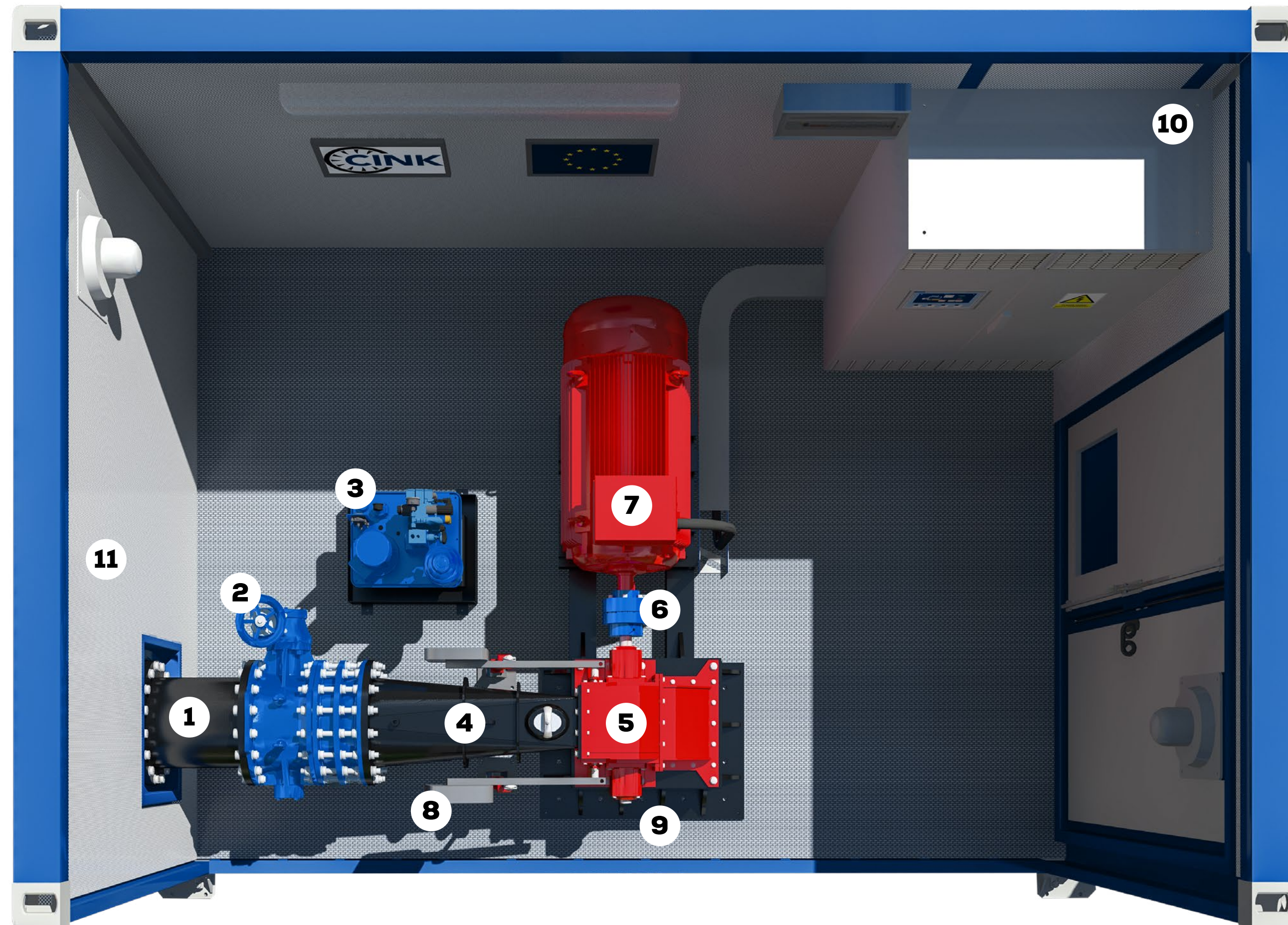
500
units
manufactured



500 MW
of installed
capacity



50
countries with
satisfied customers



Complete deliveries & short production times.

Just manufacturing your turbine? Or delivering the entire electromechanical package for your power plant? No matter what your requirements are, we'll be happy to help.

- 1 Transition pipe
- 2 Main inlet Valve
- 3 Hydraulic Unit
- 4 Inlet pipe
- 5 Turbine
- 6 Coupling
- 7 Generator
- 8 Turbine Actuation
- 9 Turbine Frame
- 10 Electrical Cabinets
Automation, LV Power, SCADA
- 11 Power Box
Containerized Powerhouse

There's always a perfect solution.

Whether you're looking for a 10-kW micro hydro source or building a 10-MW power plant, we've got you covered.



PELTON

Output range
50 - 10 000 kW

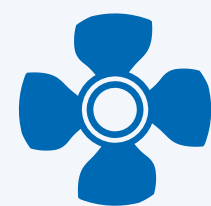
Head range
100 - 800 m



CROSSFLOW

Output range
10 - 10 000 kW

Head range
4 - 220 m



KAPLAN

Output range
100 - 5 000 kW

Head range
1 - 20 m



FRANCIS

Output range
100 - 3 000 kW

Head range
50 - 300 m



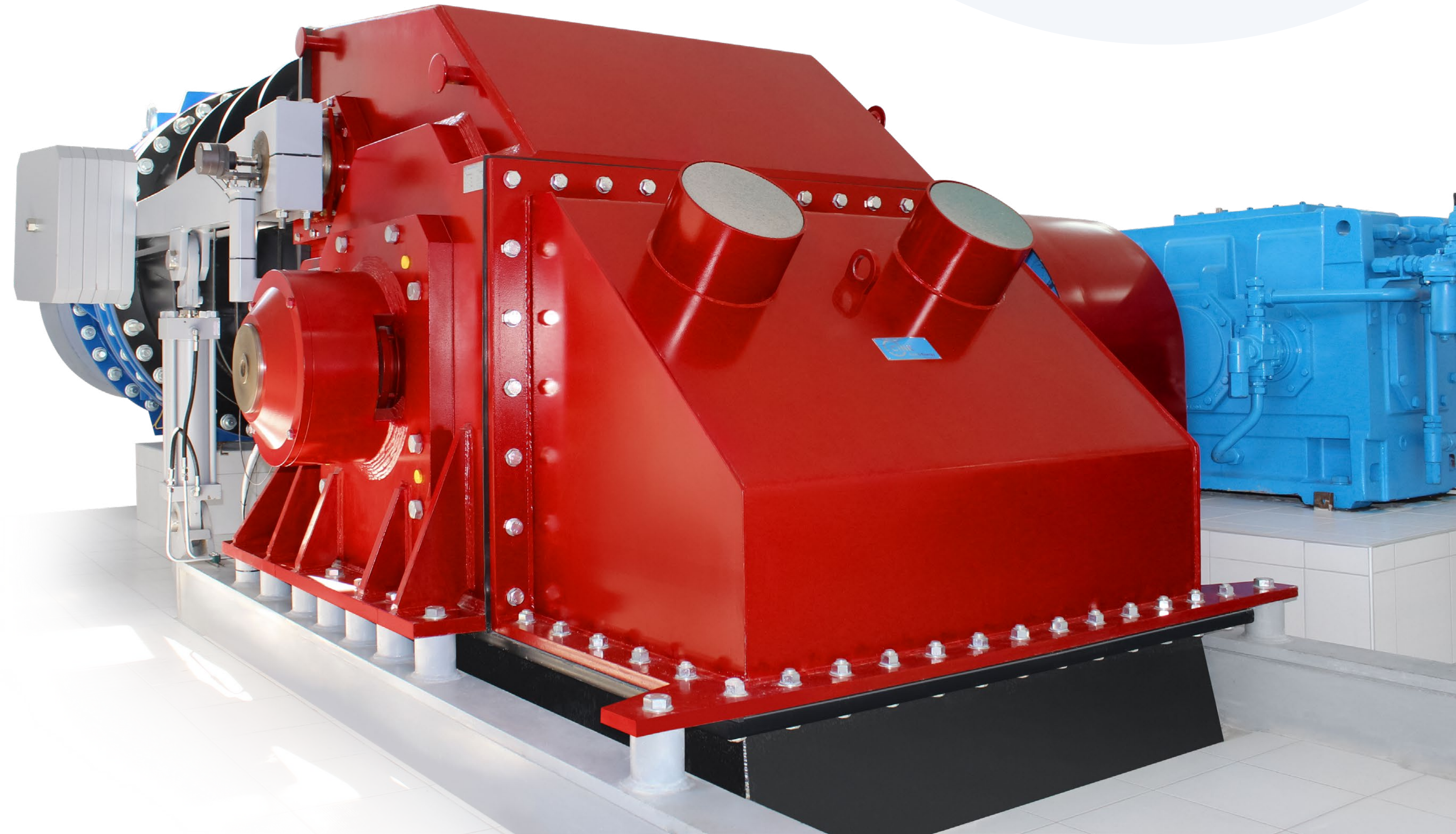


Stunning simplicity.

Our turbines are designed to minimize civil works, make the installation faster and the maintenance as simple as possible. The amount of energy produced can be checked remotely via an internet connection. So, you can let your power plant operate autonomously, leaving you free to investigate other valuable investment opportunities.

Purchasing once in a lifetime.

Made-to-measure equipment and carefully selected components with long service lives. No matter the type and size of your machine, what you'll get will serve you well for decades to come.





Always in touch.

Wherever your power plant is in the world.

The CINK Hydro - Energy network of representatives, partners and consultants extends across all of the permanently inhabited continents. Our technicians are constantly helping developers put new units into operation. React within a few hours and prepare a service team for departure within two days? If that's what you need - count on us!

We rely on the best.

Our technical partners, as well as our sub-contractors and suppliers are some of the most reputable European manufacturers of industrial equipment. SKF bearings or Schneider electrical cabinets? Perfect for us.



SIEMENS

rexroth
A Bosch Company

SKF



MarelliMotori
Inspired solutions

Schneider
Electric

SEW
EURODRIVE

FLENDER
A Siemens Company

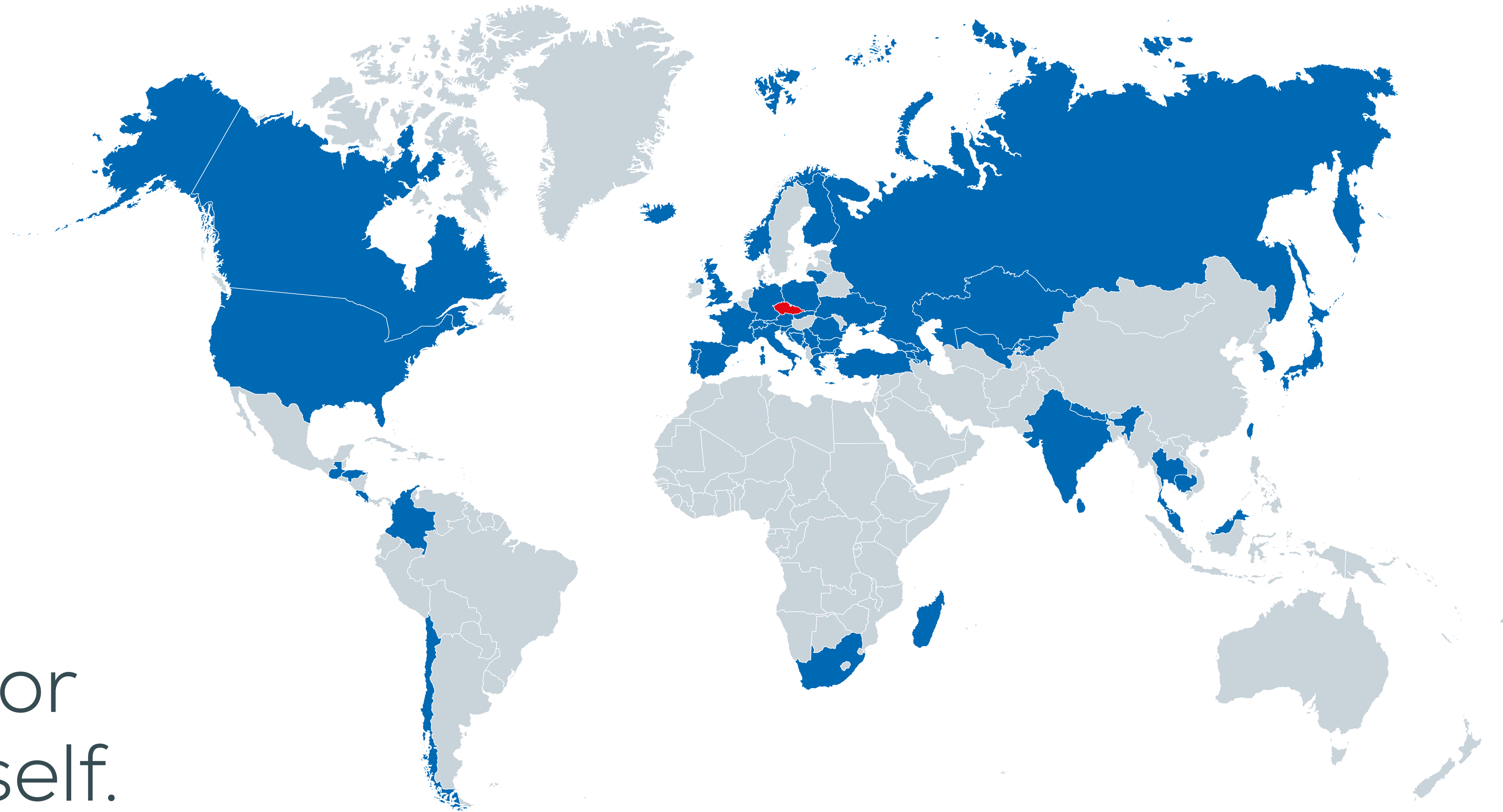
HYDAC

auma
Solutions for a world in motion

SICK
Sensor Intelligence.



Nidec
LEROY-SOMER



See for yourself.

Our power plants can be found in over 50 countries around the world. A low-head Kaplan turbine on a calm river in the North of England, a compact solution for a remote location in the Nepalese Himalayas or an elegant Pelton turbine for a power plant in South Africa. CINK machines help produce renewable energy in power plants from Chile to Japan.

- References**
- Armenia
 - Austria
 - Azerbaijan
 - Bosnia&Herz
 - Bulgaria
 - Cambodia
 - Canada
 - Chile
 - Colombia
 - Costa Rica
 - Croatia
 - Czech Republic
 - France
 - Finland
 - Germany
 - Georgia
 - Greece
 - Guatemala
 - Honduras
 - Iceland
 - India
 - Italy
 - Japan
 - Kazakhstan
 - Kyrgyzstan
 - Lithuania
 - Macedonia
 - Madagascar
 - Malaysia
 - Montenegro
 - Nepal
 - Norway
 - Poland
 - Portugal
 - Romania
 - Russia
 - Serbia
 - Slovakia
 - Slovenia
 - South Africa
 - South Korea
 - Spain
 - Sri Lanka
 - Switzerland
 - Taiwan
 - Thailand
 - Turkey
 - UK
 - Ukraine
 - Uzbekistan
 - USA



CINK HYDRO - ENERGY K.S.

Lesov 125 • 360 01 Sadov, Czech Republic

+420 353 579 154, +420 774 555 933

cink@cink-hydro-energy.com

www.cink-hydro-energy.com

